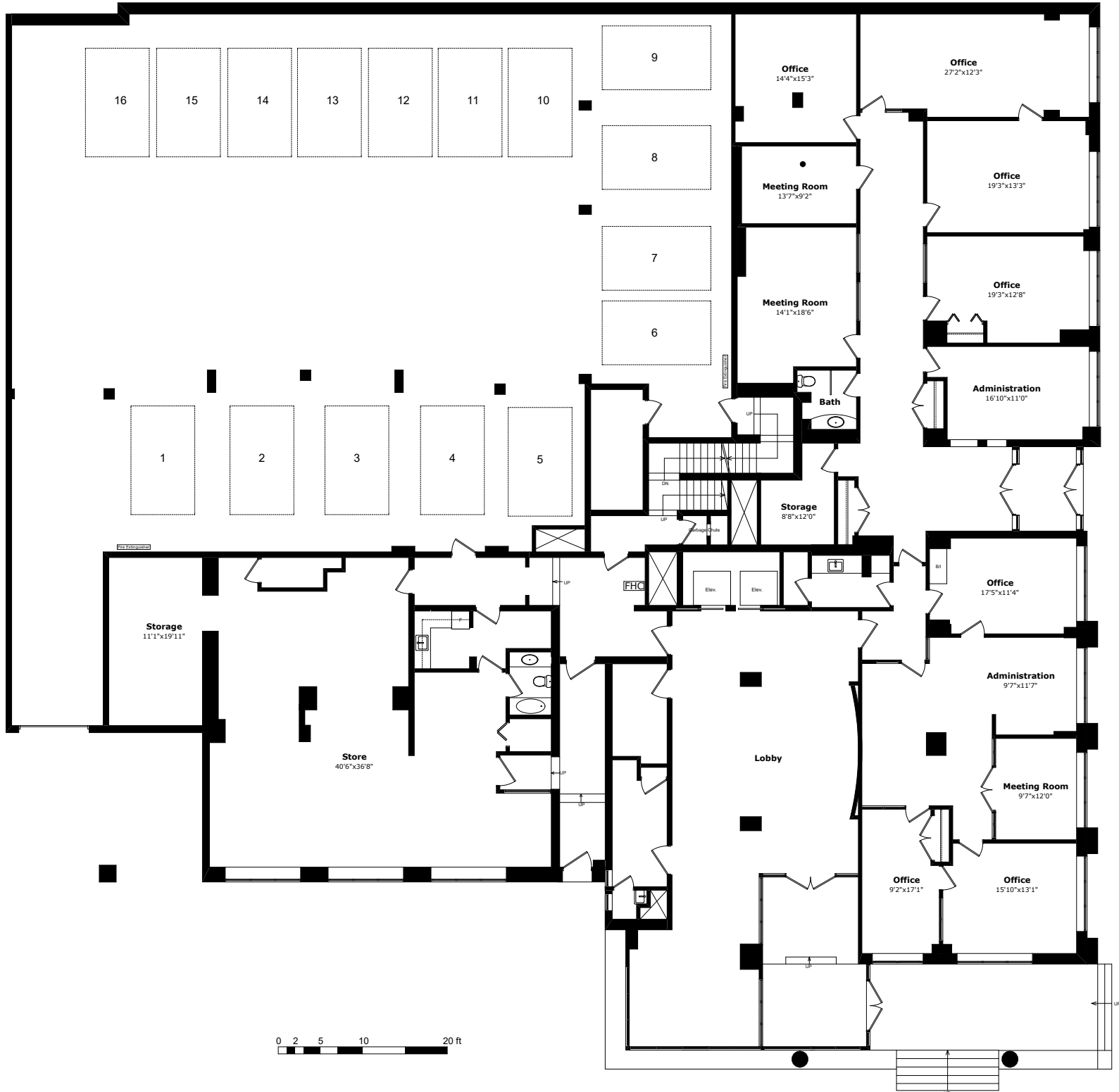


3468 DRUMMOND STREET

GROUND LEVEL

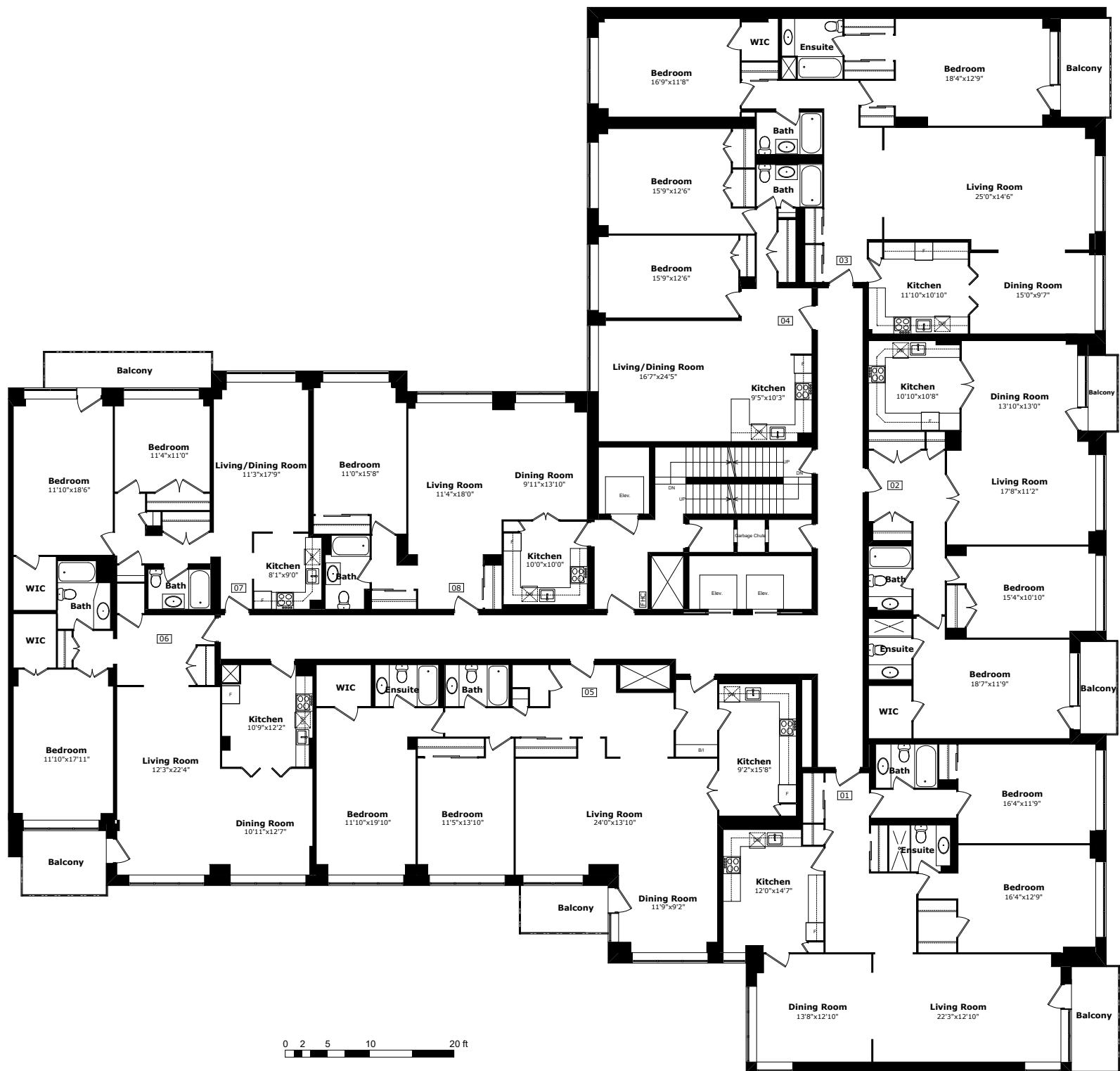


1/16" = 1'-0"

All plans and dimensions are an approximate and subject to change without notice. Note that plans and room dimensions may vary according to elevation. Suites are leased unfurnished. E.&O.E.

3468 DRUMMOND STREET

1ST-5TH LEVEL

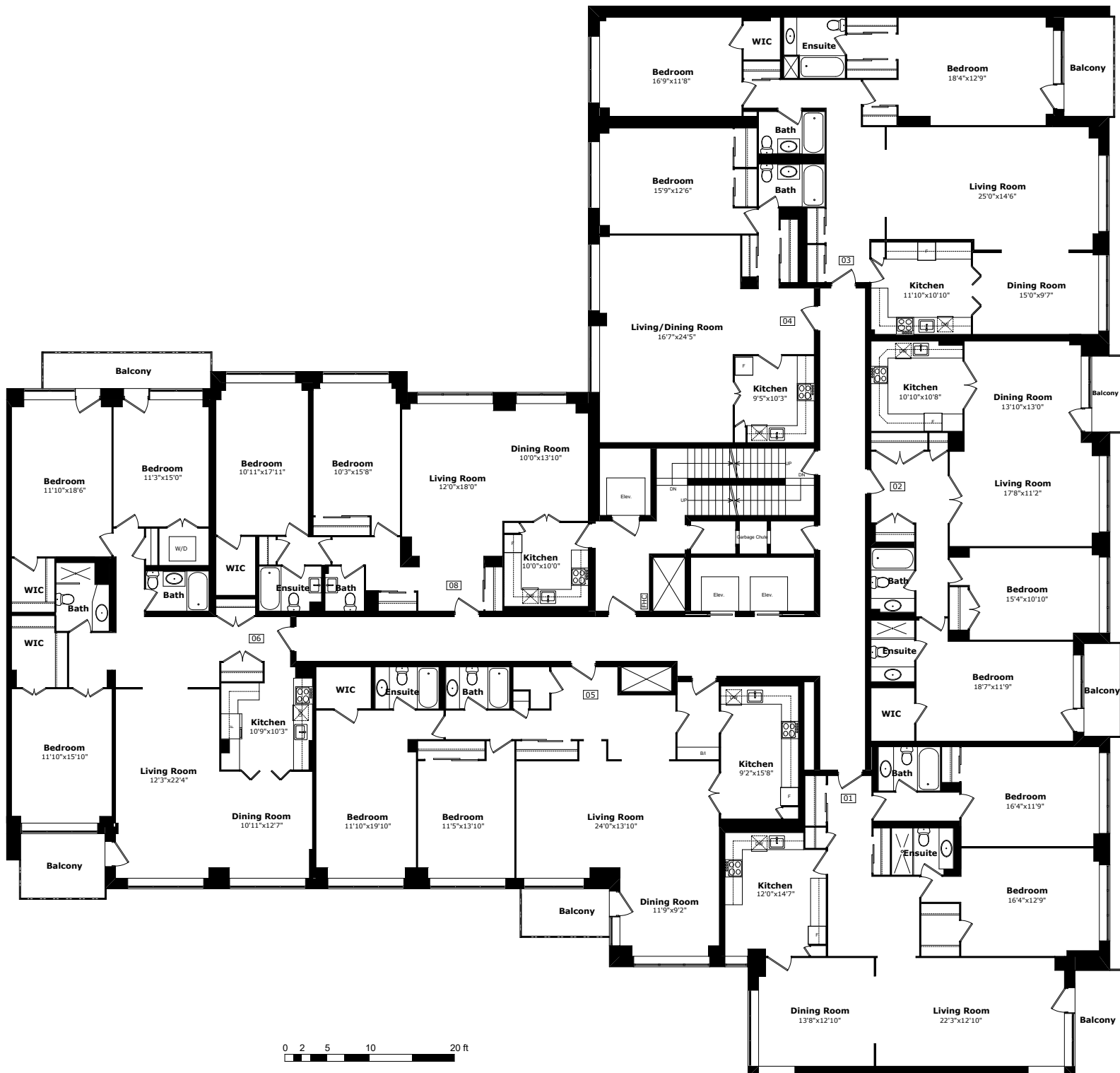


1/16" = 1'-0"

All plans and dimensions are an approximate and subject to change without notice. Note that plans and room dimensions may vary according to elevation. Suites are leased unfurnished. E.&O.E.

3468 DRUMMOND STREET

6TH-8TH LEVEL

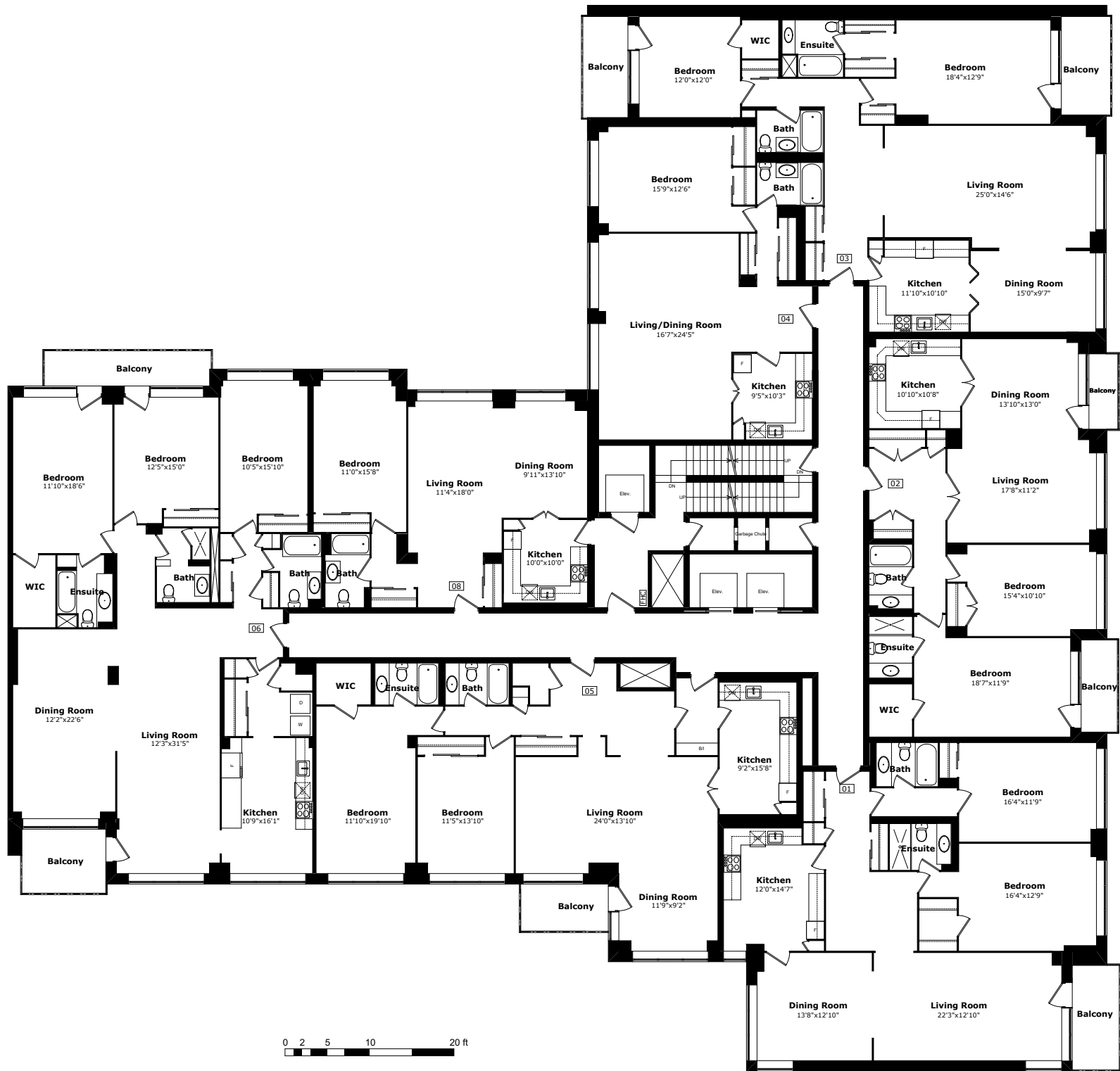


$$1/16" = 1'-0"$$

All plans and dimensions are an approximate and subject to change without notice. Note that plans and room dimensions may vary according to elevation. Suites are leased unfurnished. E.&O.E.

3468 DRUMMOND STREET

9TH-10TH LEVEL

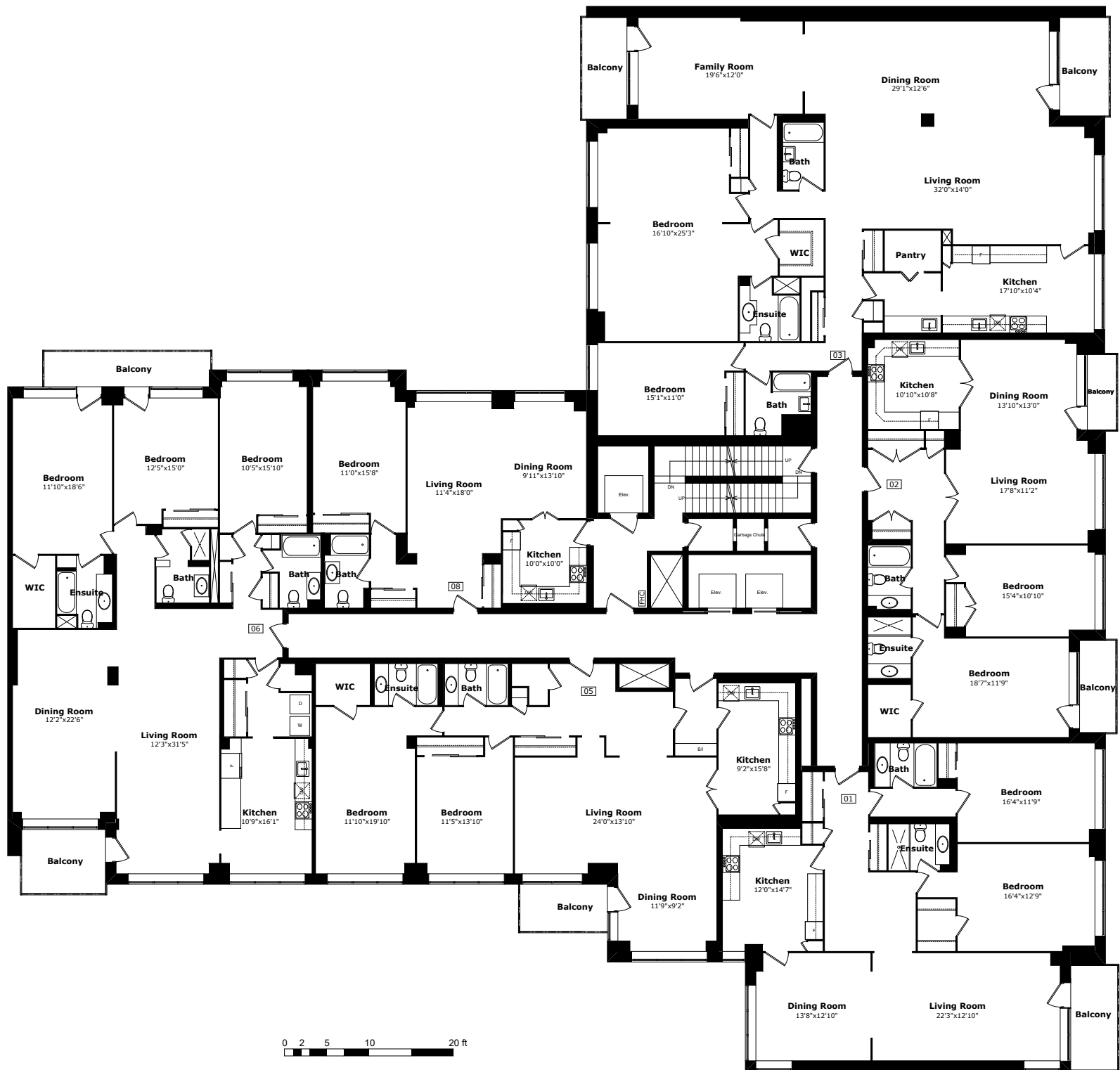


1/16" = 1'-0"

All plans and dimensions are an approximate and subject to change without notice. Note that plans and room dimensions may vary according to elevation. Suites are leased unfurnished. E.&O.E.

3468 DRUMMOND STREET

11TH LEVEL

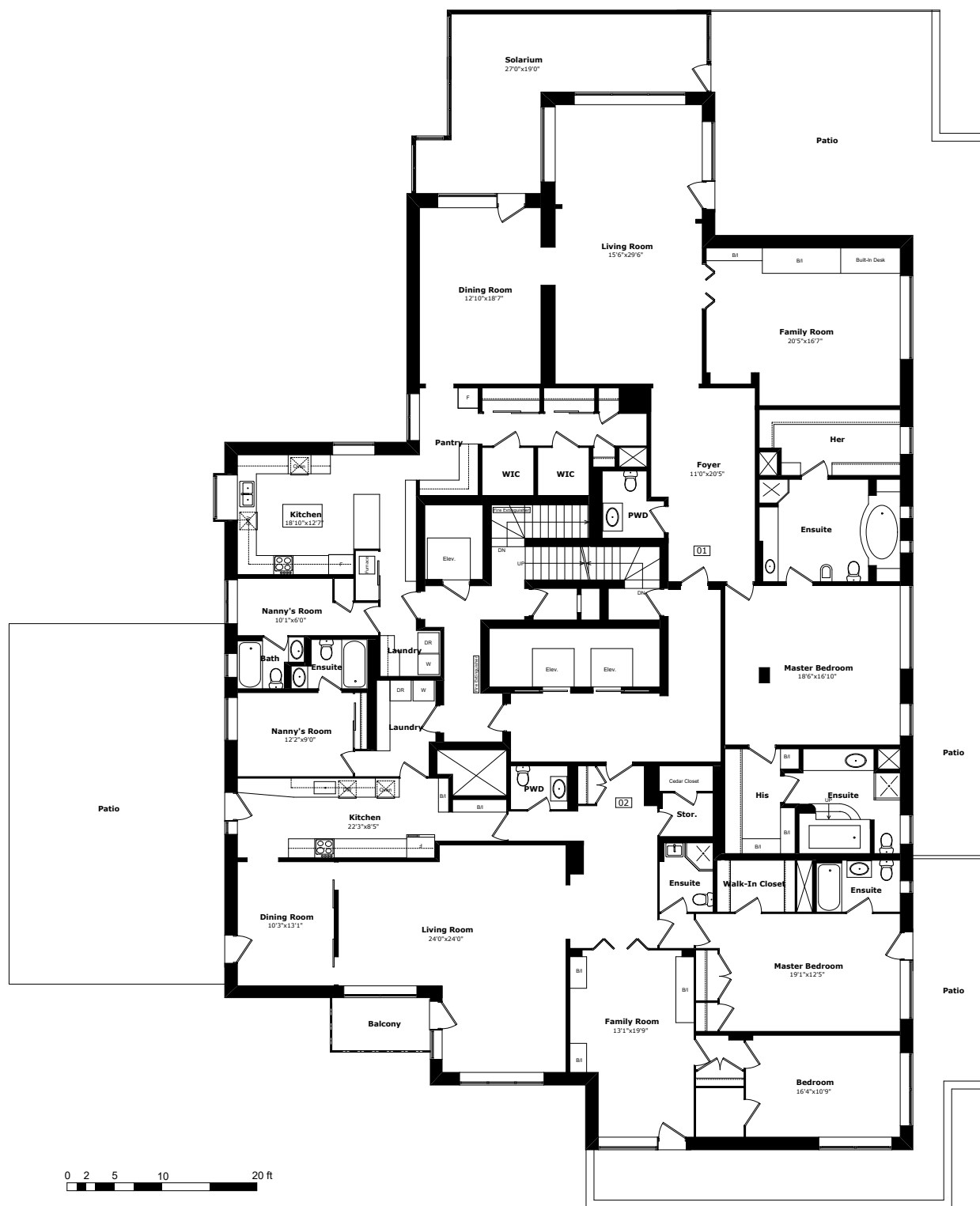


1/16" = 1'-0"

All plans and dimensions are an approximate and subject to change without notice. Note that plans and room dimensions may vary according to elevation. Suites are leased unfurnished. E.&O.E.

3468 DRUMMOND STREET

12TH LEVEL

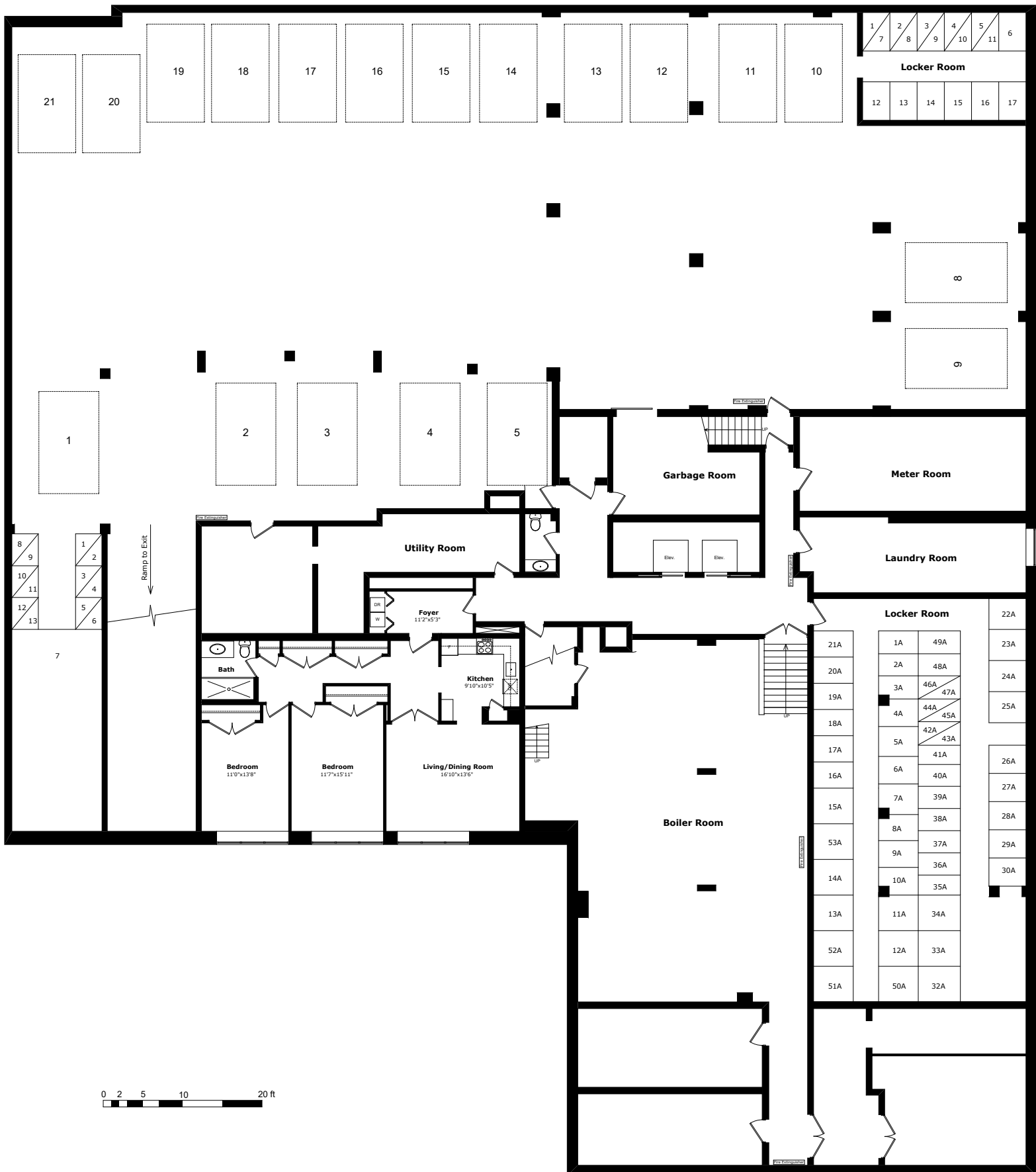


$$1/16" = 1'-0"$$

All plans and dimensions are an approximate and subject to change without notice. Note that plans and room dimensions may vary according to elevation. Suites are leased unfurnished. E.&O.E.

3468 DRUMMOND STREET

BASEMENT LEVEL



$1/16" = 1'-0"$

All plans and dimensions are an approximate and subject to change without notice. Note that plans and room dimensions may vary according to elevation. Suites are leased unfurnished. E.&O.E.